

# DOOH DHAOSP01.8

PROFESSIONAL PLUG & PLAY  
DIGITAL-OUT-OF-HOME PRODUCTS



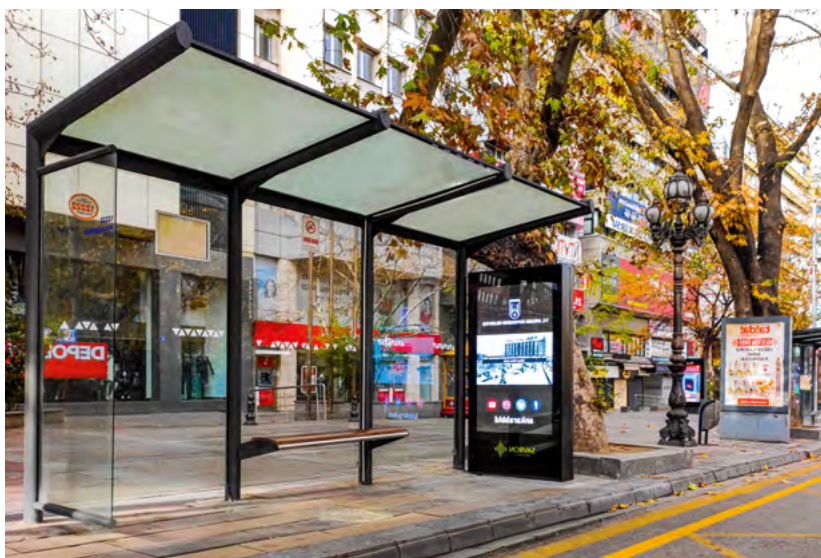
1080x1920



1080x1920

- Centralized content management and lower operational cost
- Limitless advertisement content management
- Turnkey solution for DOOH digital advertisement
- Customization for size, shape and color availability on request

## BUS SHELTER ANKARA / TURKEY



### General

Operating environment	outdoor
Pixel pitch	1.8mm
Service type	front and rear access
Calibrated brightness (nits)	>3.650nits
Lamp type	Flip-Chip Micro
Lifespan (hours at %50 brightness)	>100.000hours
White color calibration (adj.)	3.500K~8.500K
Gray scale	>16bits
Brightness control	256 level

### Module Specifications

Module dimensions (mm)	160x180
Refresh frequency	3.840Hz
Module resolution	88x100
LED drive method	dynamic
Module material	aluminum
PCB type	multilayer
PCB surface coating	UV protected film

### Product Specifications

Optional double side	YES
Product material (housing)	steel & aluminum
Product material (screen cover)	without glass
Enclosure dimensions (mm) (width x height x depth)	1.315x2.782x255
IP level	IP65
Screen resolution	600x1066px
Viewing angle (horizontal x vertical)	>160° x 160°
Minimum viewing distance	>2m
Operating temperature range	-15°C ~ +45°C
Storage temperature range	-20°C ~ +60°C
Operating humidity	10% ~ 90% non-condensing
Power input voltage	110 ~ 240 VAC
Power input frequency	50~60Hz
Active PFC	YES
Load tolerance	25% min.
Cooling	Passive cooling without fan
Standard product color	Grey (RAL 7016)

### Other

Combined screen function	Optional
Brightness adjustment	Automatic & manual
Dead pixel monitoring	Optional
Module monitoring	YES
Temperature monitoring	YES
Signal path backup	YES
Signal transmission	CAT or Fiber Optic
Standby scheduling	YES
Power on/off scheduling	Optional
Power saving mode	YES
Certification	CE-EMC, CE-LVD, RoHS, FCC

### Options

Internal player	YES
-----------------	-----

\*The mechanical and electronic specification options are available.



Apron Teknoloji AS. reserves the right to change any product specification, discontinue of any product or services without prior notice

TECHNICAL SPECIFICATIONS

LEDECA

# DOOH DHAOSP02.9

PROFESSIONAL PLUG & PLAY  
DIGITAL-OUT-OF-HOME PRODUCTS

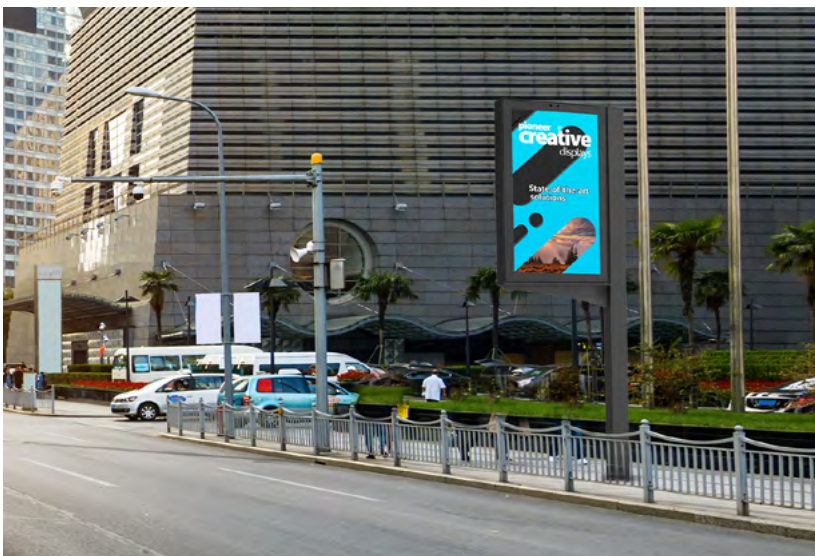


1000x1750

1000x1750

- Centralized content management and lower operational cost
- Limitless advertisement content management
- Turnkey solution for DOOH digital advertisement
- Customization for size, shape and color availability on request

KADIKÖY  
İSTANBUL / TÜRKİYE



## General

Operating environment	outdoor
Pixel pitch	2.9mm
Service type	front and rear access
Calibrated brightness (nits)	>4500nits
Lamp type	SMD
Lifespan (hours at %50 brightness)	>100.000hours
White color calibration (adj.)	3.500K~8.500K
Gray scale	>14bits
Brightness control	256 level

## Module Specifications

Module dimensions (mm)	250x250
Refresh frequency	3.840Hz
Module resolution	86x86
LED drive method	dynamic
Module material	aluminum
PCB type	multilayer
PCB surface coating	humiseal

## Product Specifications

Optional double side	YES
Product material (housing)	steel & aluminum
Product material (screen cover)	without glass
Enclosure dimensions (mm) (width x height x depth)	1.235x2.612x255
IP level	IP65
Screen resolution	344x602px
Viewing angle (horizontal x vertical)	>120° x 120°
Minimum viewing distance	>3m
Operating temperature range	-15°C ~ +45°C
Storage temperature range	-20°C ~ +60°C
Operating humidity	10% ~ 90% non-condensing
Power input voltage	110 ~ 240 VAC
Power input frequency	50~60Hz
Active PFC	YES
Load tolerance	25% min.
Cooling	Passive cooling without fan
Standard product color	Grey (RAL 7016)

## Other

Combined screen function	Optional
Brightness adjustment	Automatic & manual
Dead pixel monitoring	Optional
Module monitoring	YES
Temperature monitoring	YES
Signal path backup	YES
Signal transmission	CAT or Fiber Optic
Standby scheduling	YES
Power on/off scheduling	Optional
Power saving mode	YES
Certification	CE-EMC, CE-LVD, RoHS, FCC

## Options

Internal player	YES
-----------------	-----

\*Time synchronization is used to synchronize the time of contents on multiple DOOH.

\*The mechanical and electronic specification options are available.



Apron Teknoloji AS. reserves the right to change any product specification, discontinue of any product or services without prior notice

TECHNICAL SPECIFICATIONS

LEDECA



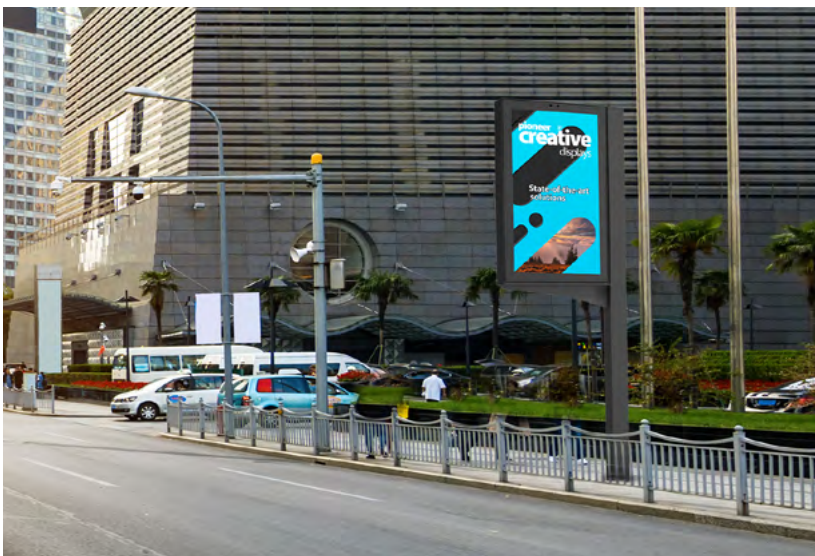
# DOOH DHAOSP02.9

PROFESSIONAL PLUG & PLAY  
DIGITAL-OUT-OF-HOME PRODUCTS



- Centralized content management and lower operational cost
- Limitless advertisement content management
- Turnkey solution for DOOH digital advertisement
- Customization for size, shape and color availability on request

KADIKÖY  
İSTANBUL / TÜRKİYE



## General

Operating environment	outdoor
Pixel pitch	2.9mm
Service type	front and rear access
Calibrated brightness (nits)	>4500nits
Lamp type	SMD
Lifespan (hours at %50 brightness)	>100.000hours
White color calibration (adj.)	3.500K~8.500K
Gray scale	>14bits
Brightness control	256 level

## Module Specifications

Module dimensions (mm)	250x250
Refresh frequency	3.840Hz
Module resolution	86x86
LED drive method	dynamic
Module material	aluminum
PCB type	multilayer
PCB surface coating	humiseal

## Product Specifications

Optional double side	YES
Product material (housing)	steel & aluminum
Product material (screen cover)	without glass
Enclosure dimensions (mm) (width x height x depth)	1.732x3.360x255
IP level	IP65
Screen resolution	516x860px
Viewing angle (horizontal x vertical)	>120° x 120°
Minimum viewing distance	>3m
Operating temperature range	-15°C ~ +45°C
Storage temperature range	-20°C ~ +60°C
Operating humidity	10% ~ 90% non-condensing
Power input voltage	110 ~ 240 VAC
Power input frequency	50~60Hz
Active PFC	YES
Load tolerance	25% min.
Cooling	Passive cooling without fan
Standard product color	Grey (RAL 7016)

## Other

Combined screen function	Optional
Brightness adjustment	Automatic & manual
Dead pixel monitoring	Optional
Module monitoring	YES
Temperature monitoring	YES
Signal path backup	YES
Signal transmission	CAT or Fiber Optic
Standby scheduling	YES
Power on/off scheduling	Optional
Power saving mode	YES
Certification	CE-EMC, CE-LVD, RoHS, FCC

## Options

Internal player	YES
-----------------	-----

\*Time synchronization is used to synchronize the time of contents on multiple DOOH.

\*The mechanical and electronic specification options are available.



Apron Teknoloji AS. reserves the right to change any product specification, discontinue of any product or services without prior notice

TECHNICAL SPECIFICATIONS

LEDECA

# DOOH DHAOSP03.9

PROFESSIONAL PLUG & PLAY  
DIGITAL-OUT-OF-HOME PRODUCTS



- Centralized content management and lower operational cost
- Limitless advertisement content management
- Turnkey solution for DOOH digital advertisement
- Customization for size, shape and color availability on request

DOOH  
BODRUM / TÜRKİYE



## General

Operating environment	outdoor
Pixel pitch	3.9mm
Service type	front and rear access
Calibrated brightness (nits)	>5.500nits
Lamp type	SMD
Lifespan (hours at %50 brightness)	>100.000hours
White color calibration (adj.)	3.500K~8.500K
Gray scale	>14bits
Brightness control	256 level

## Module Specifications

Module dimensions (mm)	500x250
Refresh frequency	3.840Hz
Module resolution	128x64
LED drive method	dynamic
Module material	aluminum
PCB type	multilayer
PCB surface coating	humiseal

## Product Specifications

Optional double side	YES
Product material (housing)	steel & aluminum
Product material (screen cover)	without glass
Enclosure dimensions (mm) (width x height x depth)	1.235x2.612x255
IP level	IP65
Screen resolution	256x448px
Viewing angle (horizontal x vertical)	>120° x 120°
Minimum viewing distance	>4m
Operating temperature range	-15°C ~ +45°C
Storage temperature range	-20°C ~ +60°C
Operating humidity	10% ~ 90% non-condensing
Power input voltage	110 ~ 240 VAC
Power input frequency	50~60Hz
Active PFC	YES
Load tolerance	25% min.
Cooling	Passive cooling without fan
Standard product color	Grey (RAL 7016)

## Other

Combined screen function	Optional
Brightness adjustment	Automatic & manual
Dead pixel monitoring	Optional
Module monitoring	YES
Temperature monitoring	YES
Signal path backup	YES
Signal transmission	CAT or Fiber Optic
Standby scheduling	YES
Power on/off scheduling	Optional
Power saving mode	YES
Certification	CE-EMC, CE-LVD, RoHS, FCC

## Options

Internal player	YES
-----------------	-----

\*Time synchronization is used to synchronize the time of contents on multiple DOOH.

\*The mechanical and electronic specification options are available.



Apron Teknoloji AS. reserves the right to change any product specification, discontinue of any product or services without prior notice

TECHNICAL SPECIFICATIONS

LEDECA



# DOOH DHAOSP03.9

PROFESSIONAL PLUG & PLAY  
DIGITAL-OUT-OF-HOME PRODUCTS



1500x2500



1500x2500

- Centralized content management and lower operational cost
- Limitless advertisement content management
- Turnkey solution for DOOH digital advertisement
- Customization for size, shape and color availability on request

## BUS SHELTER ANKARA / TURKEY



### General

Operating environment	outdoor
Pixel pitch	3.9mm
Service type	front and rear access
Calibrated brightness (nits)	>5.500nits
Lamp type	SMD
Lifespan (hours at %50 brightness)	>100.000hours
White color calibration (adj.)	3.500K~8.500K
Gray scale	>14bits
Brightness control	256 level

### Module Specifications

Module dimensions (mm)	500x250
Refresh frequency	3.840Hz
Module resolution	128x64
LED drive method	dynamic
Module material	aluminum
PCB type	multilayer
PCB surface coating	humiseal

### Product Specifications

Optional double side	YES
Product material (housing)	steel & aluminum
Product material (screen cover)	without glass
Enclosure dimensions (mm) (width x height x depth)	1.732x3.360x255
IP level	IP65
Screen resolution	384x640px
Viewing angle (horizontal x vertical)	>120° x 120°
Minimum viewing distance	>4m
Operating temperature range	-15°C ~ +45°C
Storage temperature range	-20°C ~ +60°C
Operating humidity	10% ~ 90% non-condensing
Power input voltage	110 ~ 240 VAC
Power input frequency	50~60Hz
Active PFC	YES
Load tolerance	25% min.
Cooling	Passive cooling without fan
Standard product color	Grey (RAL 7016)

### Other

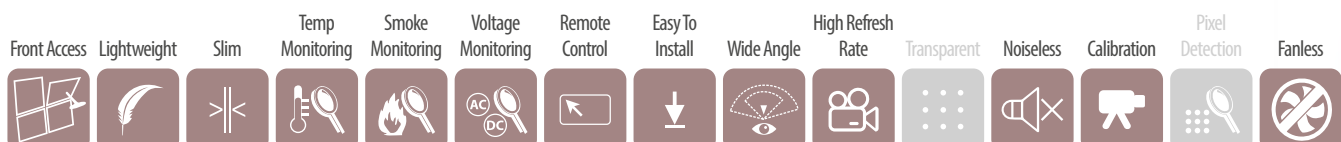
Combined screen function	Optional
Brightness adjustment	Automatic & manual
Dead pixel monitoring	Optional
Module monitoring	YES
Temperature monitoring	YES
Signal path backup	YES
Signal transmission	CAT or Fiber Optic
Standby scheduling	YES
Power on/off scheduling	Optional
Power saving mode	YES
Certification	CE-EMC, CE-LVD, RoHS, FCC

### Options

Internal player	YES
-----------------	-----

\*Time synchronization is used to synchronize the time of contents on multiple DOOH.

\*The mechanical and electronic specification options are available.



Apron Teknoloji AS. reserves the right to change any product specification, discontinue of any product or services without prior notice

TECHNICAL SPECIFICATIONS

LEDECA